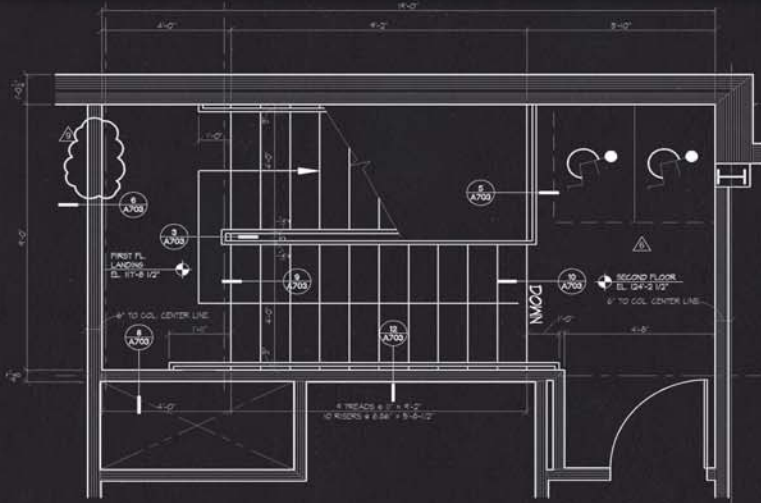
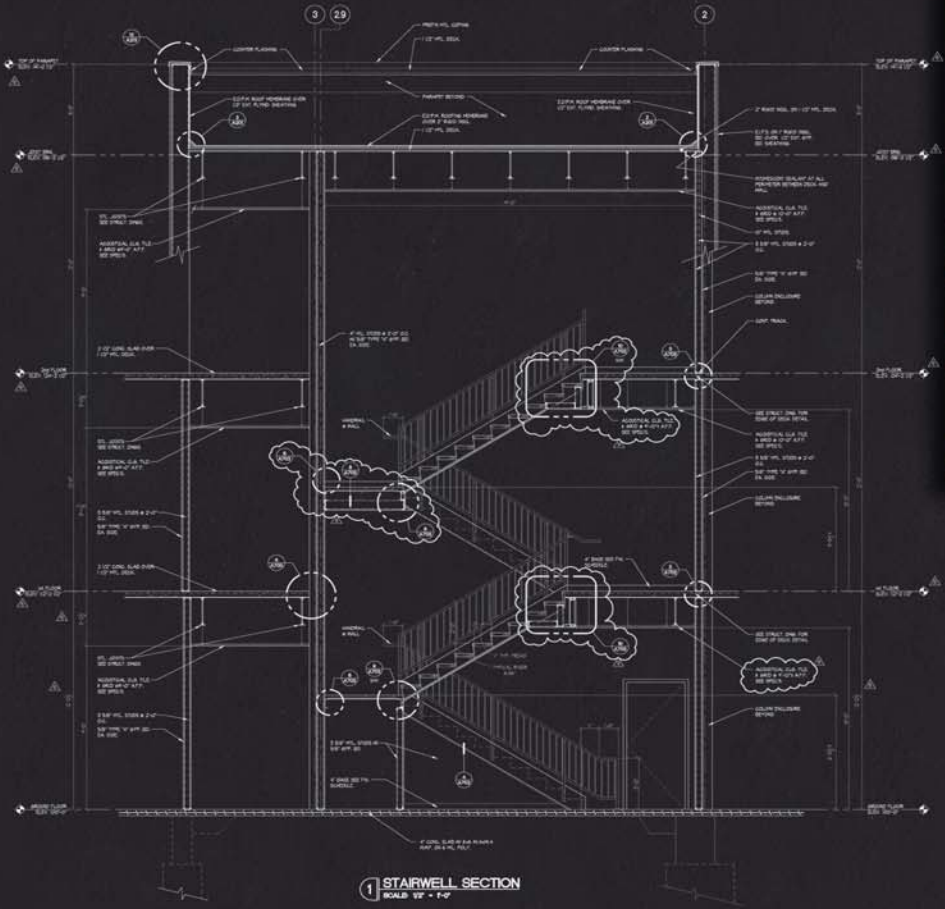


PORTFOLIO

PROFESSIONAL

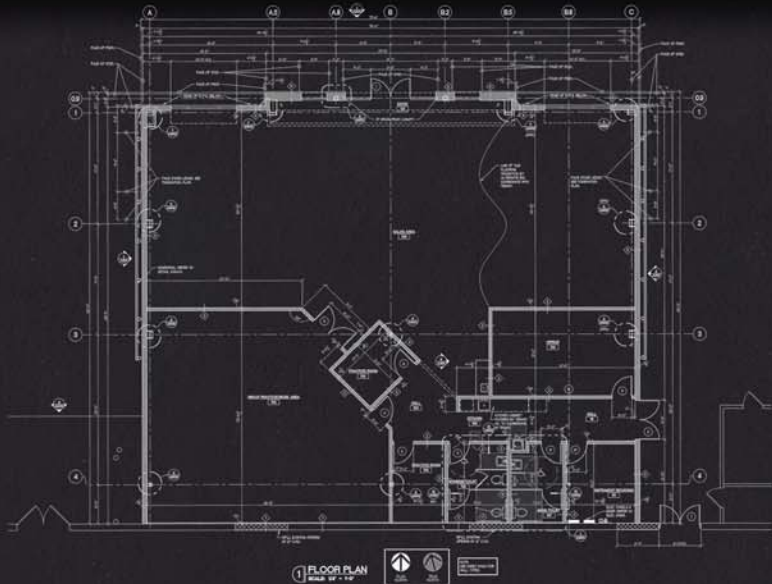
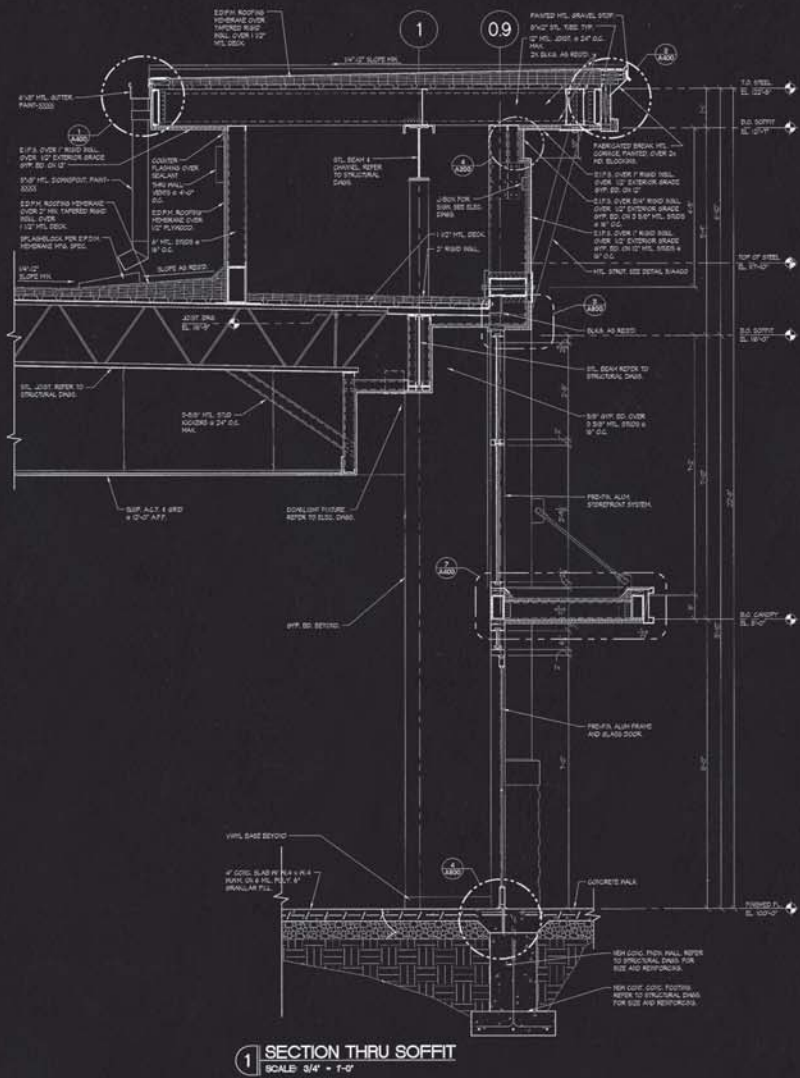
WORK



# VATTEROTT COLLEGE

Description: Three (3) story 16,000 s.f. Office and Technical Training Facility, St. Ann, MO. Cost \$7,000,000

Role: Architectural Detailing, Construction Documents Preparation & Coordination, Stair Design and Detail Coordination.

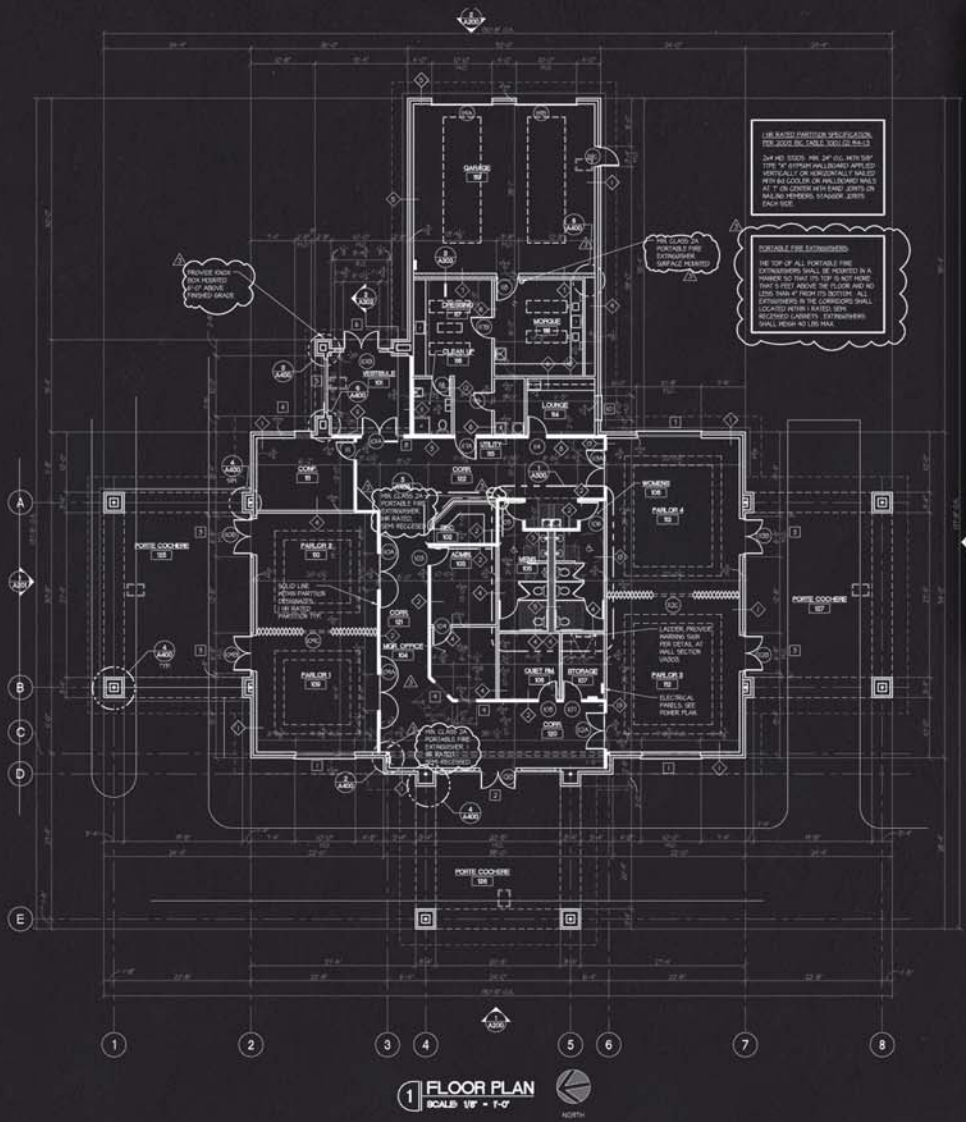


# LACEFIELD MUSIC

Description: One (1) story, 5,400 s.f. Retail Facility, South County Shopping Center, St. Louis, MO

Role: Space Planning, Design Development, Architectural Detailing, Code Review, Construction Documents, Permit Expediting.

Challenges: Maintained required retail area despite limitations set by fire separation area requirement and property boundary restriction.



# McCLENDON TEAT MORTUARY

Description: One (1) story, 6,000 s.f. funeral service facility.

Role: Programing, Design Development, Site Planning, Code Review, Construction Documents, Permit Expediting, Construction Administration

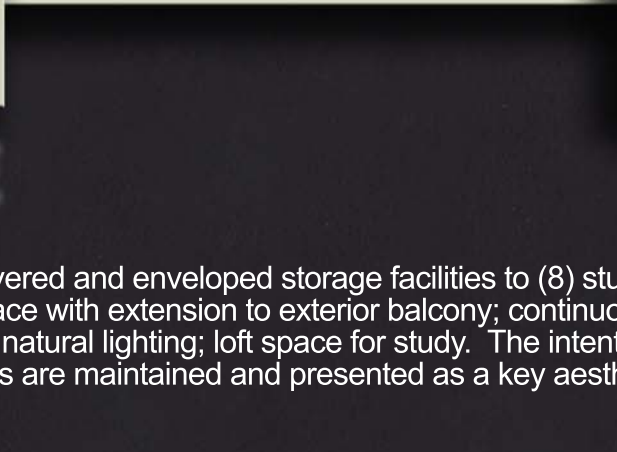
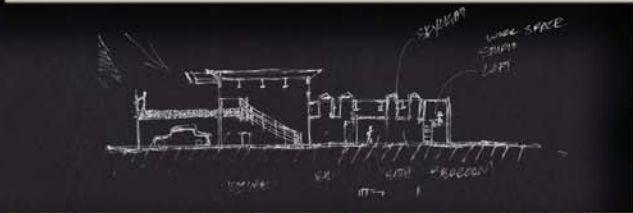
Challenges: Orientation of building footprint to maximize visibility from road and facilitate adequate vehicle circulation. The main entry for visitors at the east necessitated a strong aesthetic view as visitors approached from the parking lot. A "tower" design for the entry was incorporated.





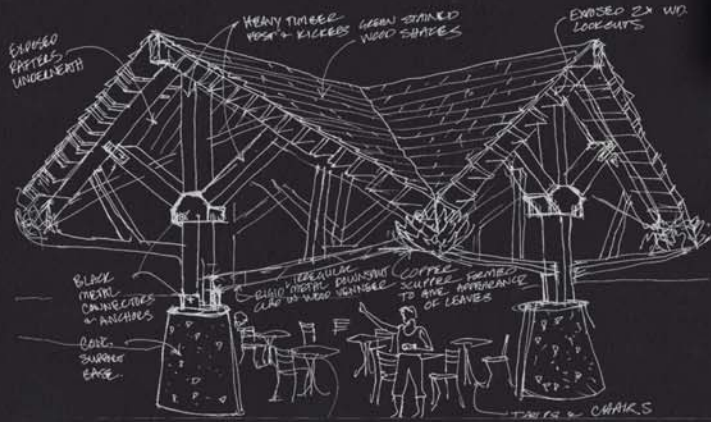
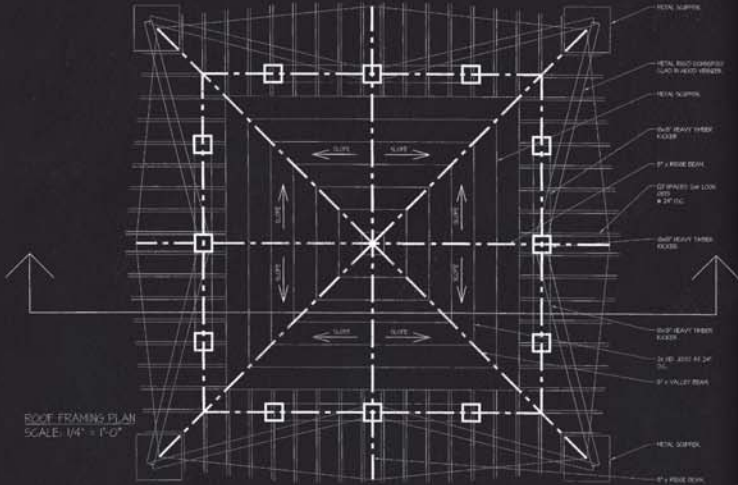
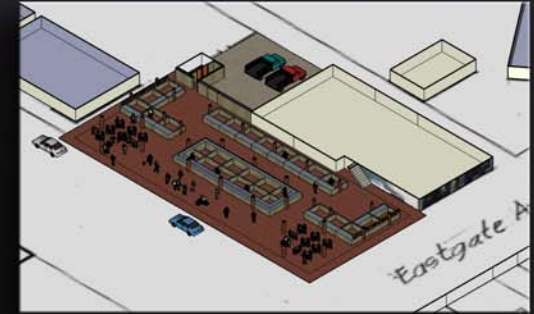
COURSE WORK





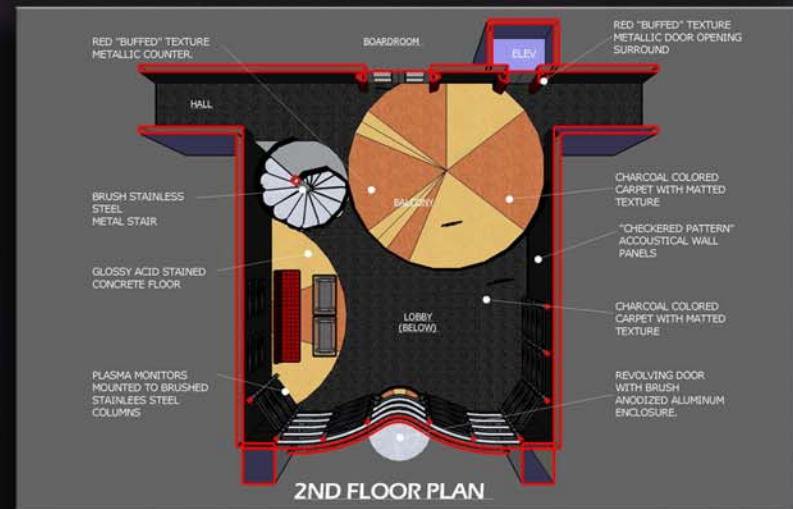
# ADAPTIVE REUSE

Description: Conversion of existing outdoor covered and enveloped storage facilities to (8) student housing units. Featuring gravel courtyard with intersecting concrete paths; gallery loft space with extension to exterior balcony; continuous strip of perimeter glazing and skylight pods above sleeping and living quarters to maximize natural lighting; loft space for study. The intent of the program was to avoid demolition of any part of the existing structure. Perimeter columns are maintained and presented as a key aesthetic element.



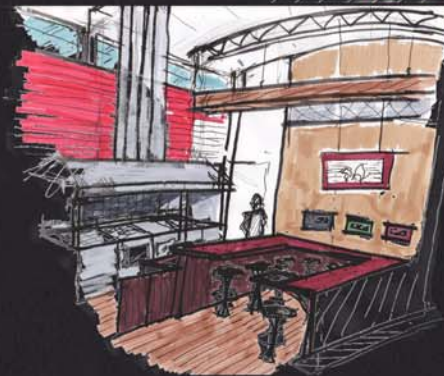
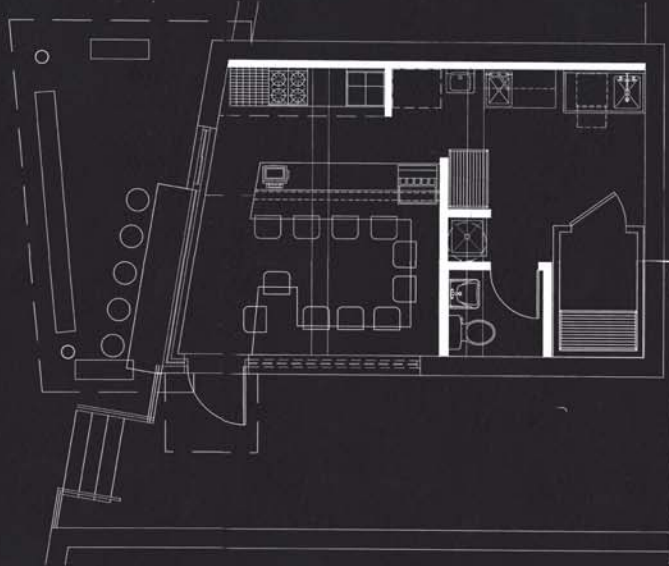
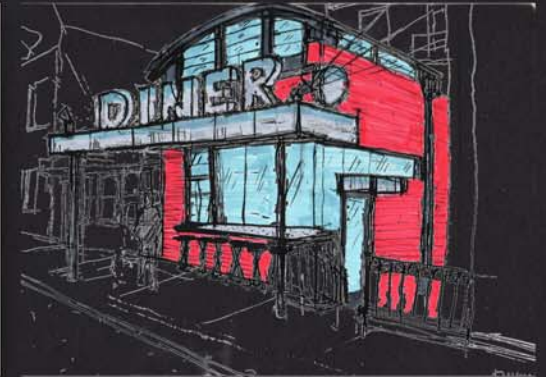
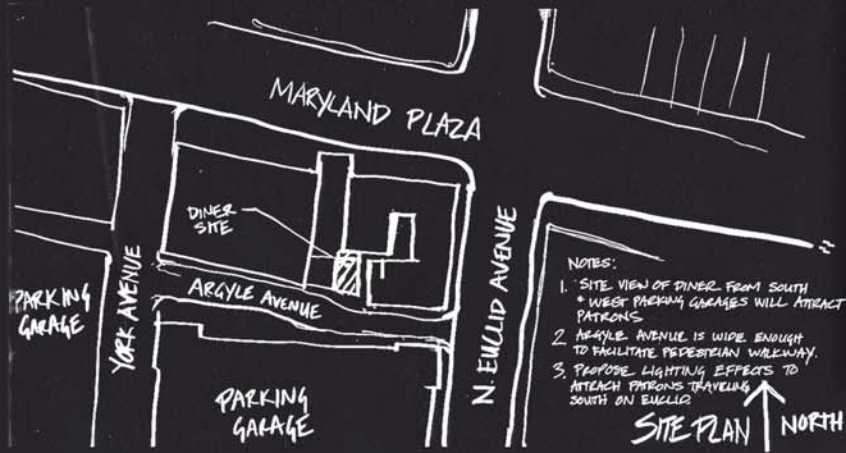
# OPEN-AIR FOOD MARKET

Description: Development of existing parking lot into (30) covered vendor stalls. Site is situated at street corner within street side shop retail center. Considering that there is limited vegetation in this urban setting, the idea was to devise a "natural" tree concept consistent with the sale of organic products. The surrounding environment was given great consideration; aesthetic detailing similar to the gable roof structure of the existing buildings was incorporated into the shelter design. Vertical support structures were minimized to facilitate open views. Area is reserved for street performed and completes a design that creates a sense of community and atmosphere for leisure activity.



# BUILDING LOBBY RENOVATION

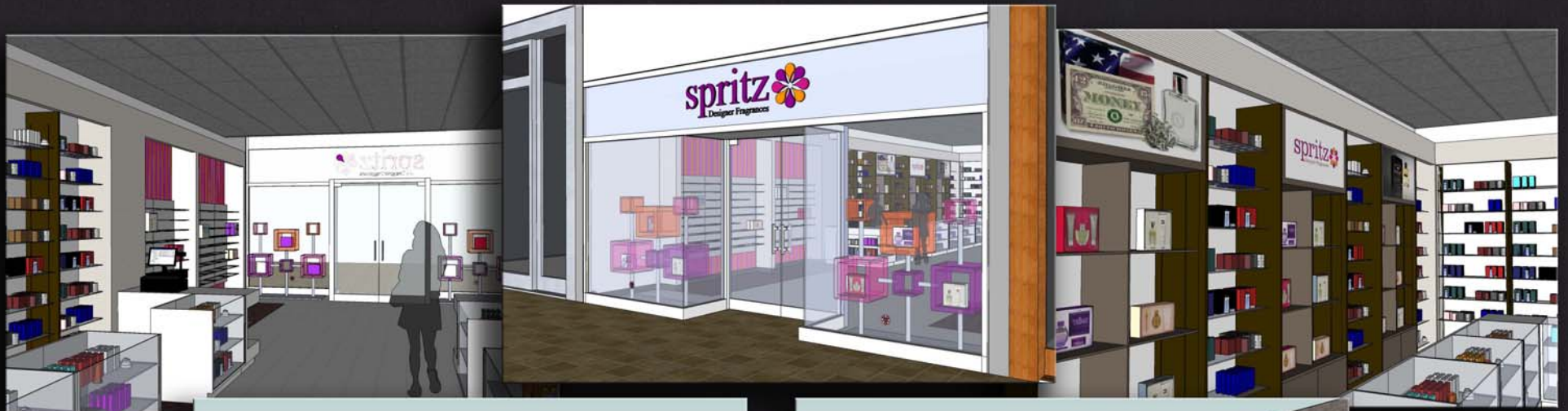
Description: Entrance lobby redesign of two story 1950's office building for audio/visual advertising company. The original design was rather outdated therefore, a more contemporary design was devised. The design features tangent circular forms including a spiral stair, receptionist desk and balcony above. Monitors which feature the companies advertising projects are mounted throughout the space. Dark grey acoustical panels line the perimeter wall. A layer of curving perforated metal panels minimizes the impact of the southern exposure to the interior space. In totality the material, forms and elements provide a strong visual connection between the first and second levels.



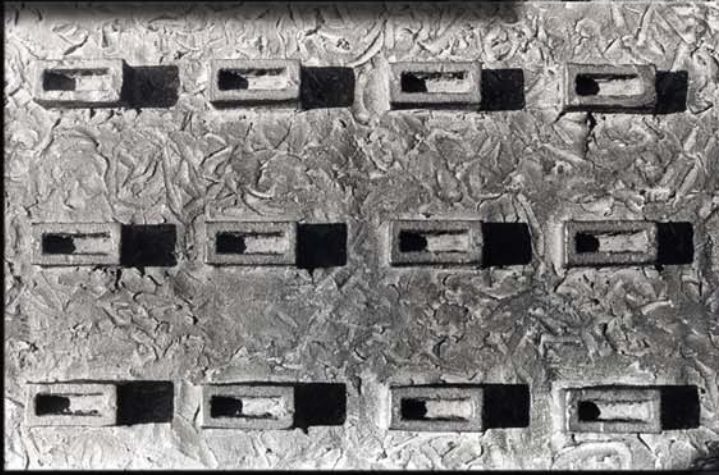
## CLASSIC DINER

Description: Renovation of small masonry building into a diner facility within an surrounding urban entertainment/restaurant district. The building is located along a street that more so serves as a service drive and is isolated from the main street side businesses. Views from the south and west parking garages provide some visibility. Lighting effects are proposed to attract additional patrons traveling south. The bar seating and the ability to see food prepared creates the "classic" diner atmosphere. The fixed exterior bar seating fronts a wall of glazing providing a clear view of a monitor and interior overall. A connection between the exterior and interior environment is achieved.





RENDERINGS



PHOTOGRAPHY